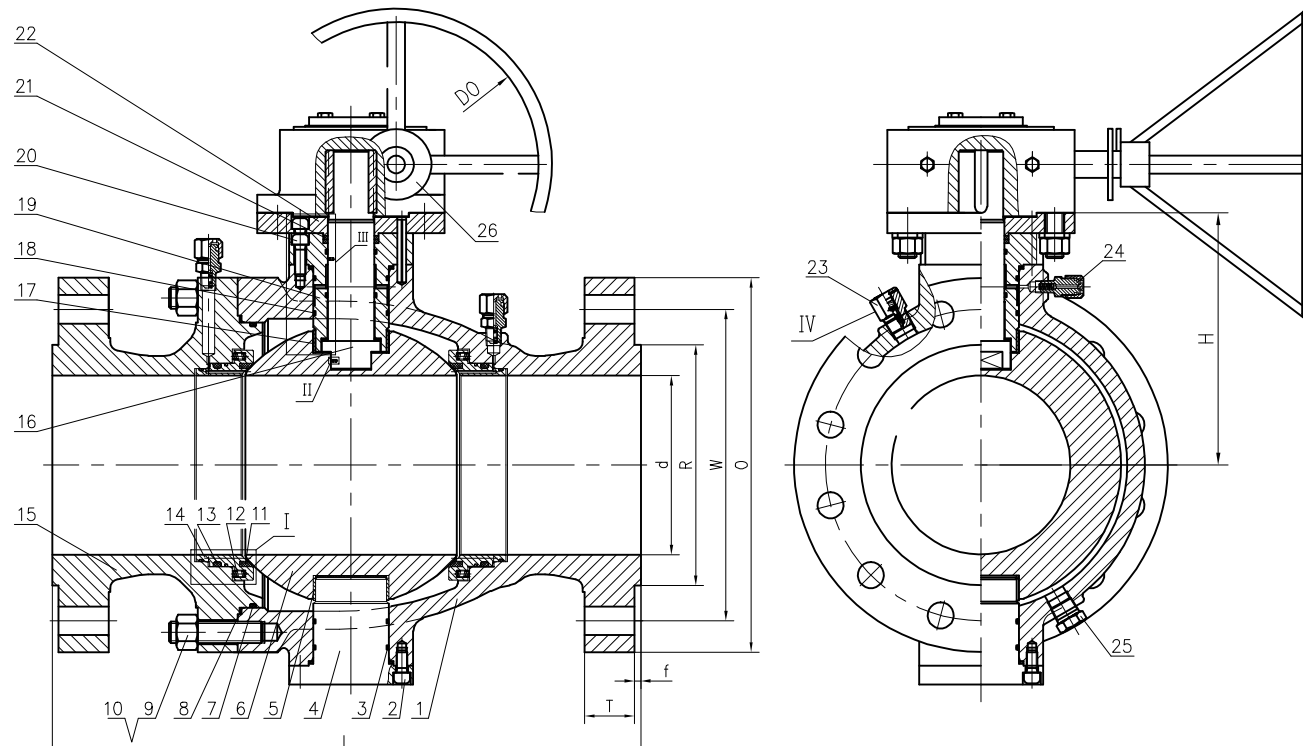
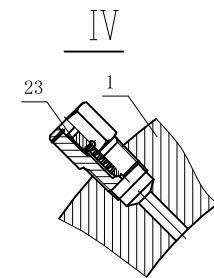
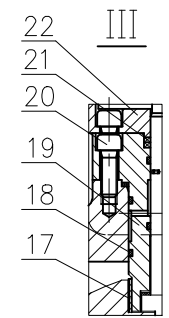
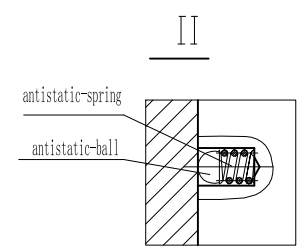
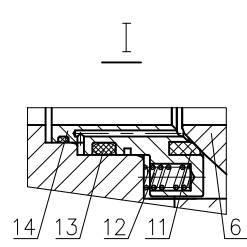


Dimensions in millimeters



NO.	PART NAME	MATERIAL	NOTE
1	BODY	ASTM A216 WCB	-
2	SCREW	ASTM A193 B7M	-
3	O-RING	VITON	-
4	TRUNNION	ASTM A105	-
5	BUSHING	SS304+PTFE	-
6	BALL	ASTM A182 F316	-
7	O-RING	VITON	-
8	GASKET	SS316+FLEXIBLE GRAPHITE	-
9	BOLT	ASTM A193 B7M	-
10	NUT	ASTM A194 2HM	-
11	SEAT INSERT	DEVLON	-
12	SEAT SPRING	INCONEL X750	-
13	O-RING	VITON	-
14	SEAT RING	ASTM A182 F316	-
15	CLOSURE	ASTM A216 WCB	-
16	STEM	ASTM A276 316	-
17	BUSHING	SS304+PTFE	-
18	O-RING	VITON	-
19	STUFFING BOX	ASTM A105+ENP	-
20	SCREW	ASTM A193 B7M	-
21	PACKING	FLEXIBLE GRAPHITE	-
22	MOUNTING FLANGE	ASTM A105	-
23	VENT VALVE	SS304	-
24	GREASE FITTING	SS304	-
25	DRAIN PLUG	SS304	-
26	GEAR	ASSEMBLY	-




ITEM NO.	NPS	d	L	O	W	R	T	f	DO	N- ϕ h	H
6	8	ϕ 201	660	ϕ 420	ϕ 349.2	ϕ 269.9	55.6	7	-	12- ϕ 32	285
-	-	-	-	-	-	-	-	-	-	-	-
-	-	-	-	-	-	-	-	-	-	-	-
-	-	-	-	-	-	-	-	-	-	-	-
-	-	-	-	-	-	-	-	-	-	-	-

DESIGN & MFG.	API 6D	RATING CL 600	D	-	-	-	-	-	-	-
PRESS-TEMP RATING	ASME B16.34	SHELL 15.4 Mpd 2225 Psi	SEAT HDYRO 11.3 Mpd 1628 Psi	C	-	-	-	-	-	-
FACE TO FACE DIM.	API 6D	SEAT AIR 0.6 Mpd 87 Psi	BACKSEAT - Mpd - Psi	B	-	-	-	-	-	-
END CONNECTION	RF	TEMPERATURE -29 TO 120 °C -20 TO 248 °F	DESIGN: WANG	DATE: 09/18/2021	TAG NO.					
END DIMENSION	ASME B16.5	MARKING API 6D	REVIEW: FANG	DATE: 09/18/2021						
PRESSURE TEST	API 6D	OTHER REQ. -	APPROVE:	DATE:						
MARKING	API 6D									
OTHER REQ.	-									

TITLE:
CLASS 600 RF TRUNNION BALL VALVE GEAR OPERATED

DWG NO. 00BA6R3C410D1G	QUOTE NO. Q200805-015395	PO NO. 327
----------------------------------	------------------------------------	----------------------



FBV, INC.
2121 FM 359 South Brookshire, TX 77423 USA
TEL: 832-203-5459 FAX: 832-203-5461
http://www.fbvalve.com

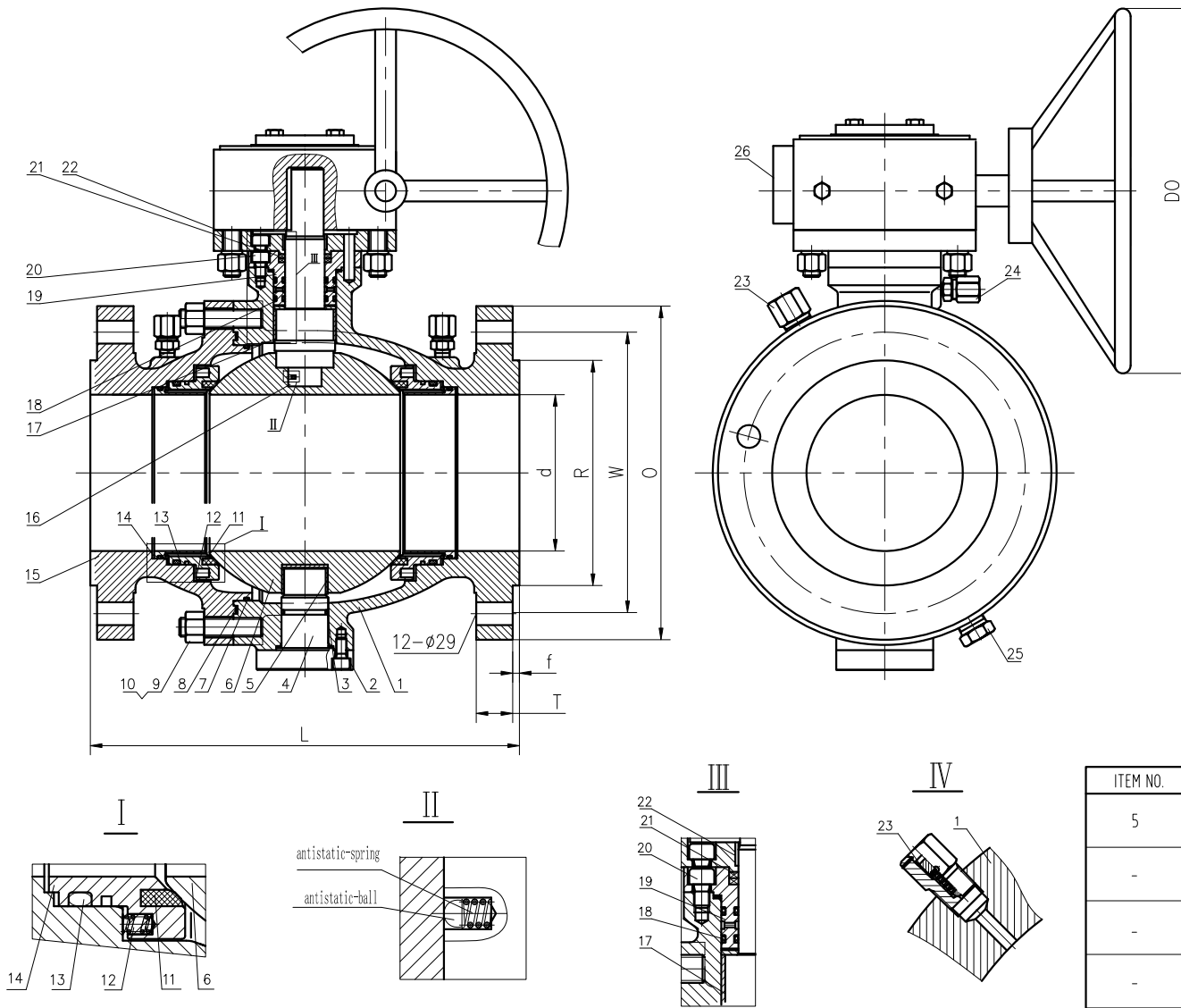
Engineered Solutions

GUTTER

PROPERTY OF FBV, INC. ANY UNAUTHORIZED FORM OF REPRODUCTION IS PROHIBITED

GUTTER

PROPERTY OF FBV INC., ANY UNAUTHORIZED FORM OF REPRODUCTION IS PROHIBITED



NO.	PART NAME	MATERIAL	NOTE
1	BODY	ASTM A352 LCB	-
2	SCREW	ASTM A320 L7M	-
3	O-RING	HNBR	-
4	TRUNNION	ASTM A350 LF2	-
5	BUSHING	SS304+PTFE	-
6	BALL	ASTM A182 F316	-
7	O-RING	HNBR	-
8	GASKET	SS316+FLEXIBLE GRAPHITE	-
9	BOLT	ASTM A320 L7M	-
10	NUT	ASTM A194 7M	-
11	SEAT INSERT	DEVLON	-
12	SEAT SPRING	INCONEL X750	-
13	O-RING	HNBR	-
14	SEAT RING	ASTM A182 F316	-
15	CLOSURE	ASTM A352 LCB	- ▲
16	STEM	ASTM A276 316	-
17	BUSHING	SS304+PTFE	-
18	O-RING	HNBR	-
19	STUFFING BOX	ASTM A350 LF2+ENP	-
20	SCREW	ASTM A320 L7M	-
21	PACKING	FLEXIBLE GRAPHITE	-
22	MOUNTING FLANGE	ASTM A350 LF2	-
23	VENT VALVE	SS304	-
24	GREASE FITTING	SS304	-
25	DRAIN PLUG	SS304	-
26	GEAR	ASSEMBLY	-

ITEM NO.	NPS	d	L	O	W	R	T	f	DO	N-φh	H
5	6	φ150	559	φ355	φ292.1	φ215.9	47.7	7	-	12-φ29	-
-	-	-	-	-	-	-	-	-	-	-	-
-	-	-	-	-	-	-	-	-	-	-	-
-	-	-	-	-	-	-	-	-	-	-	-
-	-	-	-	-	-	-	-	-	-	-	-

DESIGN & MFG.	API 6D	RATING	CL 600	D	-	-	-	-	-	-
PRESS-TEMP RATING	ASME B16.34	SHELL	14.4 Mpa/ 2100 Psi	SEAT HDYRO	10.6 Mpa/ 1535 Psi	C	-	-	-	-
FACE TO FACE DIM.	API 6D	SEAT AIR	0.6 Mpa/ 87 Psi	BACKSEAT	- Mpa/ - Psi	B	ALTER ▲			
END CONNECTION	RF	TEMPERATURE	-29 TO 120 °C/ -20 TO 248 °F	A	NEW ISSUE FOR APPROVAL					
END DIMENSION	ASME B16.5	REV		DESCRIPTION	PREP.	APP'D	DATE			
PRESSURE TEST	API 6D	DESIGN:	WANG	DATE:	09/17/2021	TAG NO.				
MARKING	API 6D	REVIEW:	FANG	DATE:	09/17/2021					
OTHER REQ.	-	APPROVE:		DATE:						

TITLE:
CLASS 600 RF TRUNNION BALL VALVE GEAR OPERATED

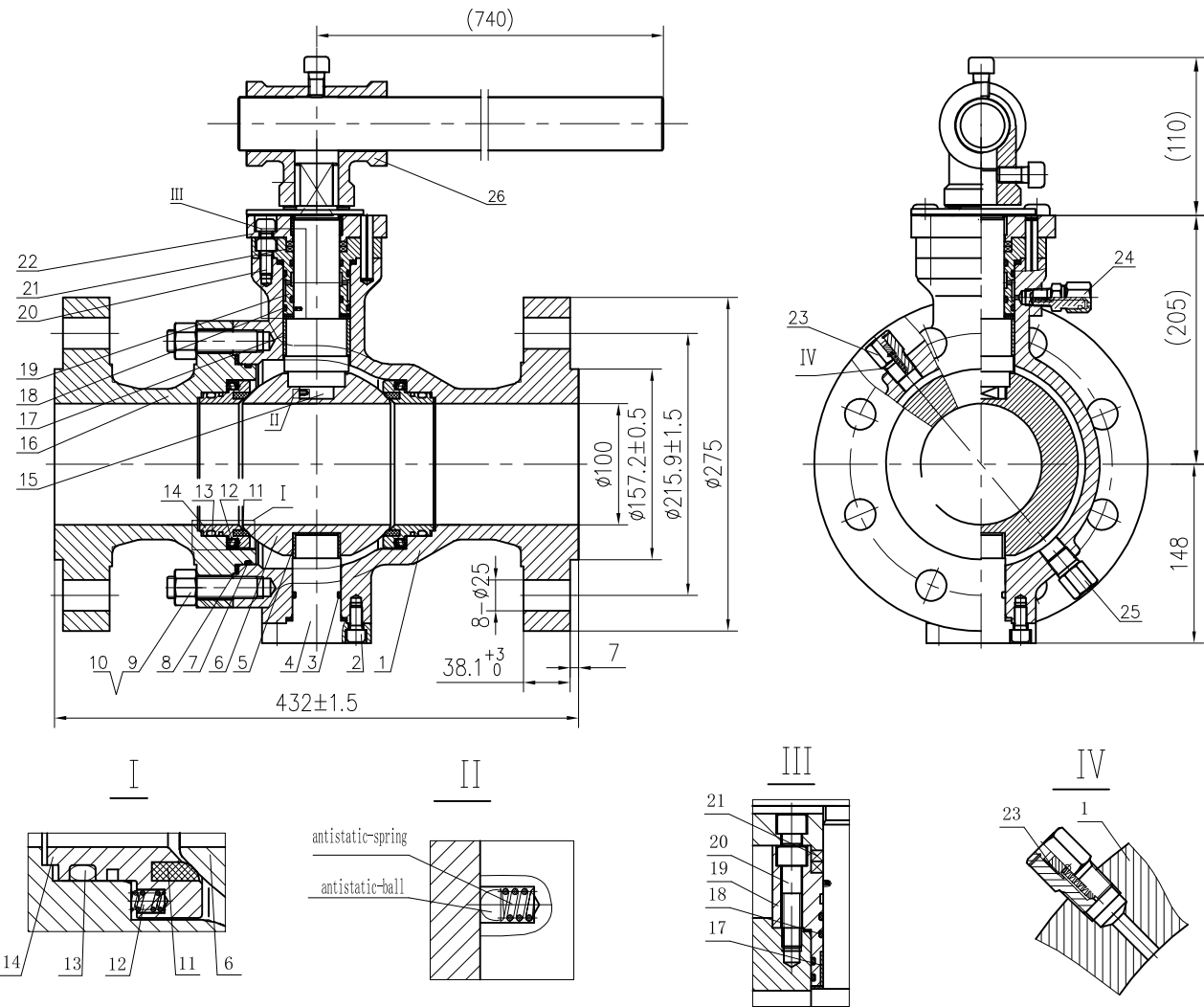
DWG NO. 00BA6R3L810D3G	QUOTE NO. Q200805-015395	PO NO. 327
----------------------------------	------------------------------------	----------------------

FBV, INC.
2121 FM 359 South Brookshire, TX 77423 USA
TEL: 832-203-5459 FAX: 832-203-5461
http://www.fbvvalve.com

Engineered Solutions

Dimensions in millimeters

ITEM: 7



NO.	PART NAME	MATERIAL	NOTE
1	BODY	ASTM A352 LCB	-
2	SCREW	ASTM A320 L7M	-
3	O-RING	HNBR	-
4	TRUNNION	ASTM A350 LF2 CL1+ENP	-
5	BUSHING	SS+PTFE	-
6	BALL	ASTM A182 F316	-
7	O-RING	HNBR	-
8	GASKET	SS+FLEXIBLE GRAPHITE	-
9	BOLT	ASTM A320 L7M	-
10	NUT	ASTM A194 7M	-
11	SEAT INSERT	DEVLON	-
12	SEAT RING	ASTM A182 F316	-
13	SEAT SPRING	INCONEL X750	-
14	O-RING	HNBR	-
15	STEM	ASTM A182 F316	-
16	CLOSURE	ASTM A352 LCB	-
17	BUSHING	SS+PTFE	-
18	O-RING	HNBR	-
19	STUFFING BOX	ASTM A350 LF2 CL1+ENP	-
20	SCREW	ASTM A320 L7M	-
21	PACKING	FLEXIBLE GRAPHITE	-
22	MOUNTING FLANGE	ASTM A350 LF2 CL1	-
23	VENT VALVE	SS304	-
24	GREASE FITTING	SS304	-
25	DRAIN PLUG	SS304	-
26	LEVER	CARBON STEEL	-
27			
28			
29			
30			

GUTTER

PROPERTY OF FBV INC., ANY UNAUTHORIZED FORM OF REPRODUCTION IS PROHIBITED

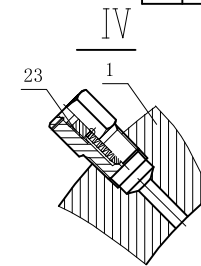
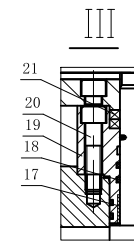
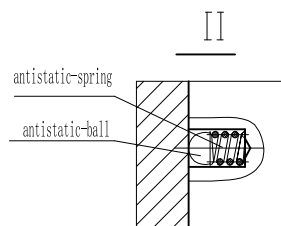
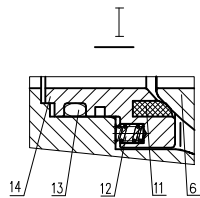
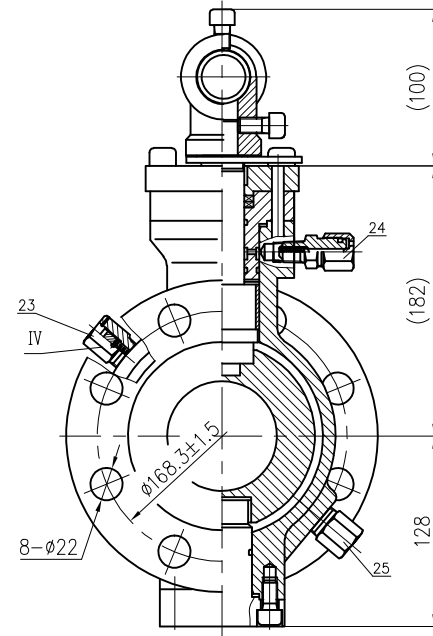
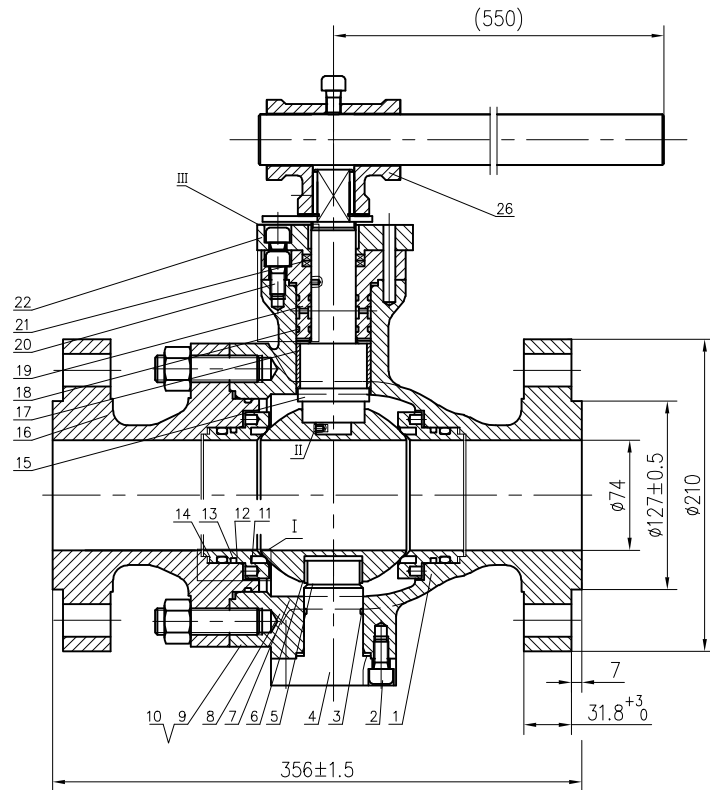
DESIGN & MFG.	API 6D	RATING CL 600	D	-	-	-	-
PRESS-TEMP RATING	ASME B16.34	SHELL 14.4 2100 <i>Mpd Pst</i>	SEAT HDYRO 10.6 1535 <i>Mpd Pst</i>	C	-	-	-
FACE TO FACE DIM.	API 6D			B	-	-	-
END CONNECTION	RF	SEAT AIR 0.6 87 <i>Mpd Pst</i>	BACKSEAT - - <i>Mpd Pst</i>	A	NEW ISSUE FOR APPROVAL		
END DIMENSION	ASME B16.5			REV	DESCRIPTION	PREP.	APP'D
PRESSURE TEST	API 6D	TEMPERATURE		DESIGN: WEN	DATE: 11/16/2020	TAG NO.	
MARKING	API 6D	-46 TO 150 _{cl} -50 TO 302 _F		REVIEW: JIANG	DATE: 11/16/2020		
OTHER REQ.	-	MEDIUM Water, Oil, Gas		APPROVE: -	DATE: -		

TITLE: NPS 4 CLASS 600 RF TRUNNION BALL VALVE LEVER OPERATE		
DWG NO.	QUOTE NO.	PO NO.
04BA6R3L810D3L	Q200805-015395	P/O 269


FBV, INC.
 2121 BRITTMOORE RD SUITE 4000
 HOUSTON, TX 77043, USA
 TEL: 832-203-5459 FAX: 832-203-5461
<http://www.fbvalve.com>

Dimensions in millimeters

ITEM: 6



NO.	PART NAME	MATERIAL	NOTE
1	BODY	ASTM A352 LCB	-
2	SCREW	ASTM A320 L7M	-
3	O-RING	HNBR	-
4	TRUNNION	ASTM A350 LF2 CL1+ENP	-
5	BUSHING	SS+PTFE	-
6	BALL	ASTM A182 F316	-
7	O-RING	HNBR	-
8	GASKET	SS+FLEXIBLE GRAPHITE	-
9	BOLT	ASTM A320 L7M	-
10	NUT	ASTM A194 7M	-
11	SEAT INSERT	DEVLON	-
12	SEAT RING	ASTM A182 F316	-
13	O-RING	HNBR	-
14	SEAT SPRING	INCONEL X750	-
15	STEM	ASTM A182 F316	-
16	CLOSURE	ASTM A352 LCB	-
17	BUSHING	SS+PTFE	-
18	O-RING	HNBR	-
19	STUFFING BOX	ASTM A350 LF2 CL1+ENP	-
20	SCREW	ASTM A320 L7M	-
21	PACKING	FLEXIBLE GRAPHITE	-
22	MOUNTING FLANGE	ASTM A350 LF2 CL1	-
23	VENT VALVE	SS304	-
24	GREASE FITTING	SS304	-
25	DRAIN PLUG	SS304	-
26	T-WAY	CARBON STEEL	-
27			
28			
29			
30			

DESIGN & MFG.	API 6D	RATING	CL 600	D	-	-	-
PRESS-TEMP RATING	ASME B16.34	SHELL	14.4 2100	SEAT HDYRO	10.6 1535	C	-
FACE TO FACE DIM.	API 6D	SEAT AIR	0.6 87	BACKSEAT	-	B	-
END CONNECTION	RF	TEMPERATURE	-46 TO 150	DESIGN:	WEN	DATE:	11/16/2020
END DIMENSION	ASME B16.5	MARKING	-50 TO 302	REVIEW:	JIANG	DATE:	11/16/2020
PRESSURE TEST	API 6D	OTHER REQ.	MEDIUM Water, Oil, Gas	APPROVE:	-	DATE:	-
				REV	DESCRIPTION	PREP.	APP'D
				A	NEW ISSUE FOR APPROVAL		

TITLE: NPS 3 CLASS 600 RF TRUNNION BALL VALVE LEVER OPERATE		
DWG NO.	QUOTE NO.	PO NO.
03BA6R3L810D3L	Q200805-015395	P/O 269
FBV, INC. 2121 BRITTMOORE RD SUITE 4000 HOUSTON, TX 77043, USA TEL: 832-203-5459 FAX: 832-203-5461 http://www.fbvalve.com		

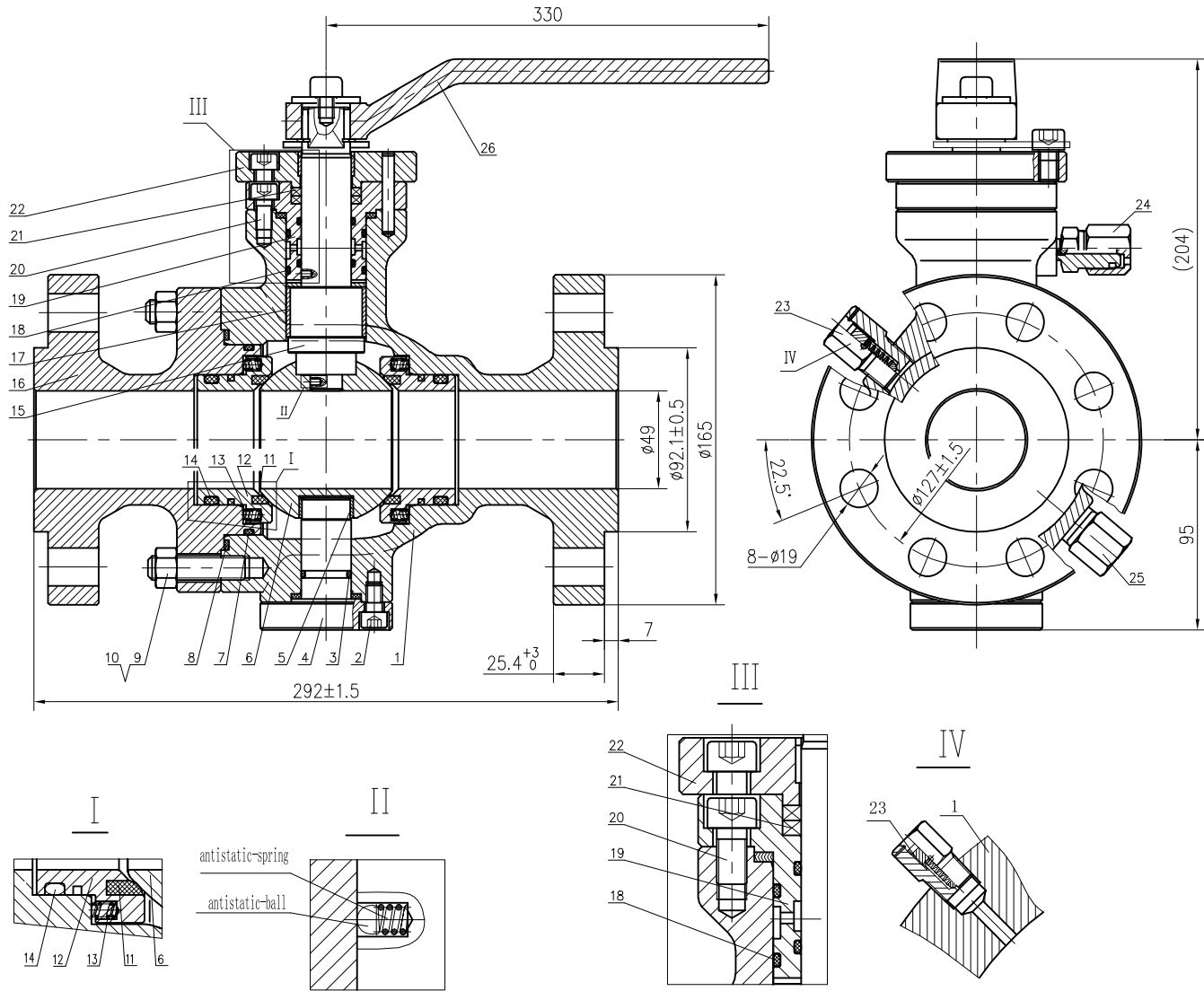


GUTTER

PROPERTY OF FBV INC., ANY UNAUTHORIZED FORM OF REPRODUCTION IS PROHIBITED

Dimensions in millimeters

ITEM: 5



NO.	PART NAME	MATERIAL	NOTE
1	BODY	ASTM A352 LCB	-
2	SCREW	ASTM A320 L7M	-
3	O-RING	HNBR	-
4	TRUNNION	ASTM A350 LF2 CL1+ENP	-
5	BUSHING	SS+PTFE	-
6	BALL	ASTM A182 F316	-
7	O-RING	HNBR	-
8	GASKET	SS+FLEXIBLE GRAPHITE	-
9	BOLT	ASTM A320 L7M	-
10	NUT	ASTM A194 7M	-
11	SEAT INSERT	DEVLON	-
12	SEAT RING	ASTM A182 F316	-
13	SEAT SPRING	INCONEL X750	-
14	O-RING	HNBR	-
15	STEM	ASTM A182 F316	-
16	CLOSURE	ASTM A352 LCB	-
17	BUSHING	SS+PTFE	-
18	O-RING	HNBR	-
19	STUFFING BOX	ASTM A350 LF2 CL1+ENP	-
20	SCREW	ASTM A320 L7M	-
21	PACKING	FLEXIBLE GRAPHITE	-
22	MOUNTING FLANGE	ASTM A350 LF2 CL1	-
23	VENT VALVE	SS304	-
24	GREASE FITTING	SS304	-
25	DRAIN PLUG	SS304	-
26	LEVER	CARBON STEEL	-
27			
28			
29			
30			

GUTTER

PROPERTY OF FBV INC., ANY UNAUTHORIZED FORM OF REPRODUCTION IS PROHIBITED

DESIGN & MFG.	API 6D	RATING CL 600	D	-	-	-
PRESS-TEMP RATING	ASME B16.34	SHELL 14.4 2100 <i>Mpd</i> <i>Psi</i>	SEAT HDYRO 10.6 1535 <i>Mpd</i> <i>Psi</i>	C	-	-
FACE TO FACE DIM.	API 6D			B	-	-
END CONNECTION	RF	SEAT AIR 0.6 87 <i>Mpd</i> <i>Psi</i>	BACKSEAT - - <i>Mpd</i> <i>Psi</i>	A	NEW ISSUE FOR APPROVAL	
END DIMENSION	ASME B16.5			REV	DESCRIPTION	PREP. APP'D
PRESSURE TEST	API 6D	TEMPERATURE		DESIGN: WEN	DATE: 11/16/2020	TAG NO.
MARKING	API 6D	-46 TO 150 _{cl} -50 TO 302 _F		REVIEW: JIANG	DATE: 11/16/2020	
OTHER REQ.	-	MEDIUM Water, Oil, Gas		APPROVE: -	DATE: -	

TITLE:
NPS 2 CLASS 600 RF TRUNNION BALL VALVE LEVER OPERATE

DWG NO.	QUOTE NO.	PO NO.
02BA6R3L810D3L	Q200805-015395	P/O 269

FBV, INC.
2121 BRITTMOORE RD SUITE 4000
HOUSTON, TX 77043, USA
TEL: 832-203-5459 FAX: 832-203-5461
<http://www.fbvalve.com>

Engineered Solutions